

jane denham  
REAL ESTATE GROUP



18-730 Aspen Road

# Premier Corner Unit...

Premier corner unit with full sun exposure and a fenced yard! Located in Aspen Wynde, a charming community of one-level patio homes in Comox. This lovely unit, 2 BD/ 2 BA, 1,140 sf, built in 2008, boasting 9' ceilings, gas fireplace, crown moulding and large windows illuminating a spacious plan. A generous sized master bedroom w/ walk-in closet & 4 pce bath w/ an easy step into shower, & a guest room that could be a home office or craft room. A well-designed kitchen offers a window over the sink, maple shaker cabinets, & an island with seating for guests. The adjacent family/media room offers sliding door access to the fully fenced private patio, ideal for morning coffee in the sun or cool shade on a hot summer day. With a small storage room for golf clubs, bikes, etc., and a single car garage, energy efficient gas forced air furnace. Gas H/W tank 2024. There are no age restrictions, 1 dog or 1 cat. Located near transit, a short stroll to Quality Foods & Land and Sea Brew Pub!

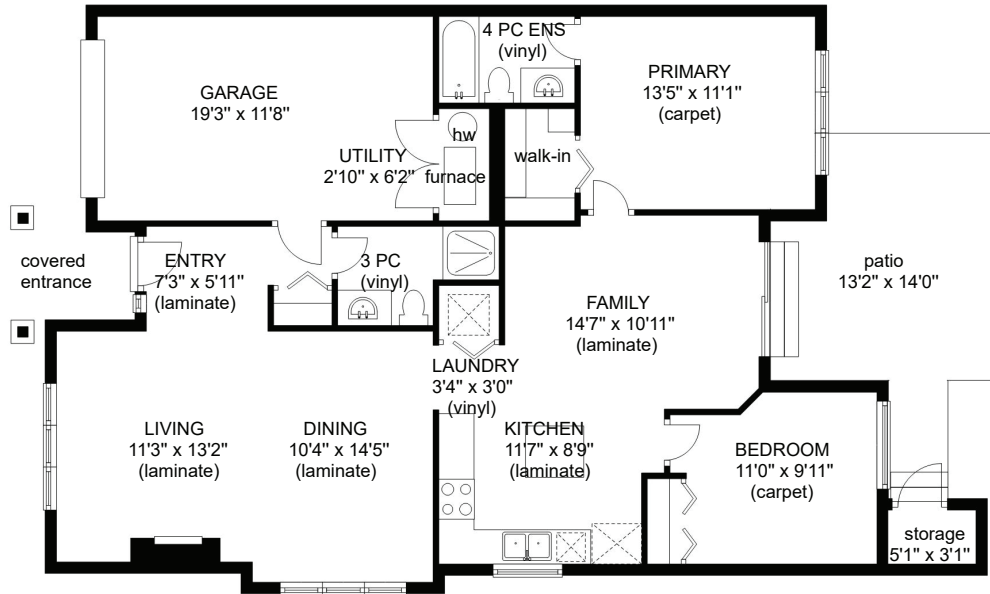


18-730 Aspen Road  
Listed at \$620,000  
2 Bd | 2 Ba  
1,140 Sq Ft



MLS #: 1025788  
Strata Fee: \$356 /mo  
Year Built: 2008  
Zoning: RM1.2

# 18 - 730 ASPEN ROAD



	FINISHED SQ.FT	UNFINISHED SQ.FT	TOTAL SQ.FT
MAIN	1140	0	1140

CEILING HEIGHT 9'0"

GARAGE	0	240	240
UTILITY	0	21	21
STORAGE	0	23	23



Prepared for the exclusive use of Jane Denham  
RE/MAX Ocean Pacific Realty  
250-898-1220

Measurements on the plans are intended for visual reference purposes only and should be verified



Visit our website for all Comox Valley listings, neighbourhood guides,  
and resources for buyers & sellers!

[www.janedenham.com](http://www.janedenham.com)



**Jane Denham**  
PERSONAL REAL ESTATE CORPORATION  
250.898.1220  
jane@janedenham.com



**Grace Denham-Clare**  
REAL ESTATE AGENT  
250.897.8890  
grace@janedenham.com



**Marnie Denham-Clare**  
REAL ESTATE AGENT  
250.218.4563  
marnie@janedenham.com



282 Anderton Road  
Comox, BC V9M 1Y2  
o. 250.339.2021

